



Managing Wisconsin's trust assets for public education.

TS-201805
Oneida County

SALE NAME: Bear Lake

Sale Type -Ticket (Mill scale) for Pulp & Bolts – Logs Scaled

SALE LOCATION

Oneida County, Township of: Minocqua
Sections: 23,24,26 Town: 38N Range: 5E
Sale Size: 168 Acres

CONTRACT PERIOD: 3 Years

Contacts: John Schwarzmann, 715-277-3366 715-892-0662 (c)
Kevin Burns 715-360-7438 (c)



The mark of responsible forestry
FSC® C120950

Timber sold under this contract is certified. FSC® 100%:

Legal Descriptions

<u>Town and Range</u>	<u>Section</u>	<u>Quarter-Quarters</u>
T38N-R5E	23 – 24 - 26	NESE, NWSE, SWSE – NWSW, Gov. Lot #4 – NWNE, NENW

Cutting Requirements

- 1) Cut all trees marked in orange paint.
- 2) Cut all aspen with one or more sticks.
- 3) Cut all red maple > 4 inches DBH and white birch > 8 inches DBH.
- 4) Do not cut any trees with teal paint or oaks and spruce.
- 5) Cutting lines are marked with blue property boundaries, red cutting lines or swamp edges.
- 6) Logging will be allowed from July 5th to April 1st under deep snow, frozen ground or dry conditions.

Timber Volume Estimates & Minimum Bid Values

<u>Pulpwood & Bolts (Tons)</u>	<u>Estimated Volume</u>	<u>Minimum Bid</u>
Aspen	850 Tons	\$16.00/Ton
Mixed Hardwood	1,420 Tons	\$13.00/Ton
Balsam fir	40 Tons	\$5.00/Ton
Red Pine	450 Tons	\$18.00/Ton
White Pine	380 Tons	\$14.00/Ton

<u>Sawtimber(MBF)</u>	<u>Estimated Volume</u>	<u>Minimum Bid</u>
White Birch	8 MBF	\$150.00/MBF
Red Maple	20 MBF	\$150.00/MBF
Red Pine	256 MBF	\$125.00/MBF
White Pine	110 MBF	\$120.00/MBF

ADVERTISED VALUE / MINIMUM ACCEPTABLE BID: \$95,080 Volume per acre: 14.0 Cord Equiv./acre

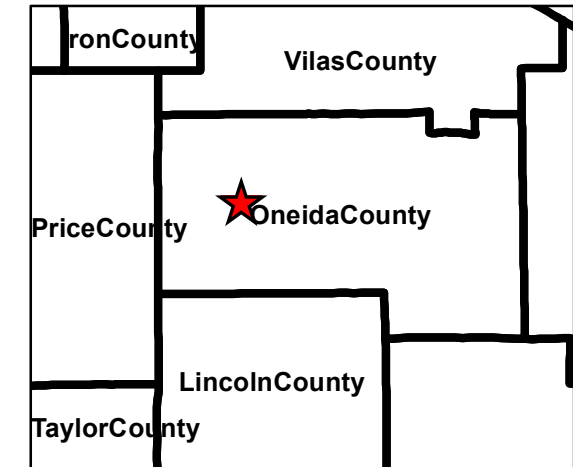
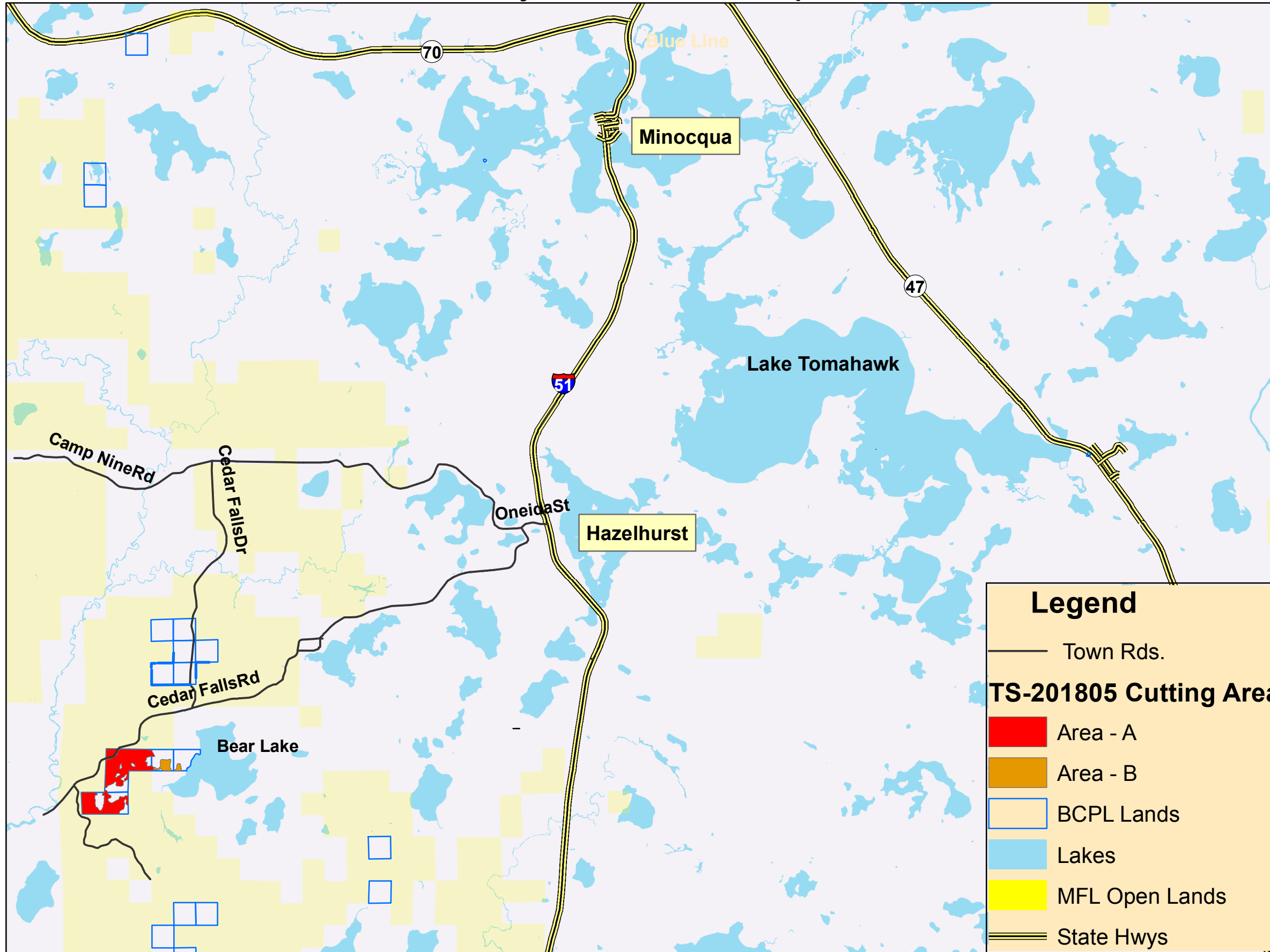
SALE OBJECTIVES: First cut of a shelterwood in the larger diameter pine and a thinning to promote vigor in the denser stands of smaller red pine. Sale also attempts to remove as much understory red maple as possible. Sale also regenerates 4 acres of aspen and removes older hardwoods from younger aspen stands.

Access & Terrain- Direct woods road access from Cedar Falls Road. An extensive woods road network ensures short skidding distances. Terrain is flat to rolling hills. Soils are sandy loam and well drained. They should drain in a day or two following heavy rain.

OTHER SALE REQUIREMENTS AND CONDITIONS:

- The BCPL can restrict the type of equipment used on the job if conditions or damage warrant.
- BMP's (see Field Manual PUB-FR-093-2010) are mandatory for this sale.
- Notify the BCPL (715-277-3366) before you start the job.
- More than 92% of the red pine logs are less than 20 inches diameter outside bark.
- All pine pulp and sawlog volume estimates are from a 100% tally.

BCPL - TS-201805 - Bear Lake Timber Sale Area Locator Map
T38N-R5E Section 23, NESE, NWSE, SWSE - Section 24, NWSW, Gov. Lot #4
Section 26, NWNE, NENW - Oneida County, WI. - Town of Minocqua







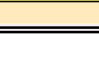



Harvest Prescription

 Shelterwood/Species Removal Cut

Cut all apen > 4 inches DBH in Area A.
 Do not trees in teal paint.
 Do not cut any oaks or spruce.
 Cut all maples > 4 inches DBH
 Cut white birch > 8 inches DBH
 Cut all trees marked in orange

Legend

-  Town Rds.
-  **TS-201805 Cutting Area**
-  Area - A
-  Area - B
-  BCPL Lands
-  Lakes
-  MFL Open Lands
-  State Hwys

Total Cutting Area: 168 Acres

Scale 1:75,000

