



Managing Wisconsin's trust assets for public education.

TS-201811 Price County

SALE NAME: Stony Creek South

Sale Type -Ticket (Mill scale) for Pulp, Bolts & Logs

SALE LOCATION

Price County, Township of: Emery
Sections: 1 Town: 37N Range: 3E
Sale Size: 55 Acres

CONTRACT PERIOD: 3 Years

Contacts: John Schwarzmann, 715-277-3366 715-892-0662 (c)
Kevin Burns 715-360-7438 (c)



The mark of
responsible forestry
FSC® C120950

Timber sold under this contract is certified. FSC® 100%:

Legal Descriptions

Town and Range
T37N-R3W

Section
1

Quarter-Quarters
SENW NESW

Cutting Requirements

- 1) Cut all trees marked in orange paint.
- 2) Cutting lines are marked with blue property boundaries, red cutting lines or swamp edges.
- 3) Logging will be allowed from July 15th to April 1st under deep snow, frozen ground or very dry conditions.
- 4) Cut all balsam fir with one or more sticks.

Timber Volume Estimates & Minimum Bid Values

<u>Pulpwood(Tons)</u>	<u>Estimated Volume</u>	<u>Minimum Bid</u>
Misc.	50 Tons	\$5.00/Ton
Mixed Hardwood	1,200 Tons	\$11.00/Ton
<u>Sawtimber(MBF)</u>	<u>Estimated Volume</u>	<u>Minimum Bid</u>
Misc.	1 MBF	\$150.00/MBF
Red Maple	2 MBF	\$150.00/MBF
Sugar Maple	6 MBF	\$350.00/MBF
Yellow Birch	6 MBF	\$250.00/MBF

ADVERTISED VALUE / MINIMUM ACCEPTABLE BID: \$17,500 **Volume per acre:** 10.0 Cord. Equiv./acre

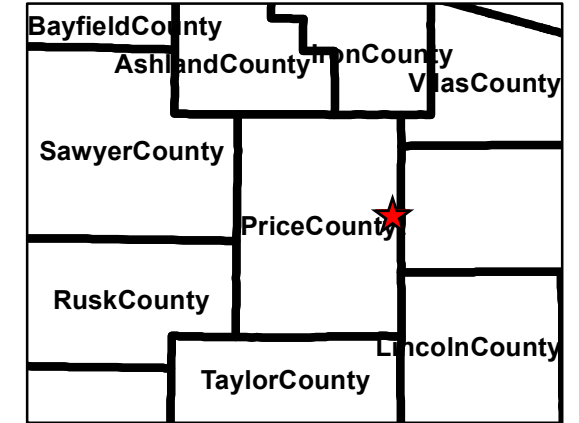
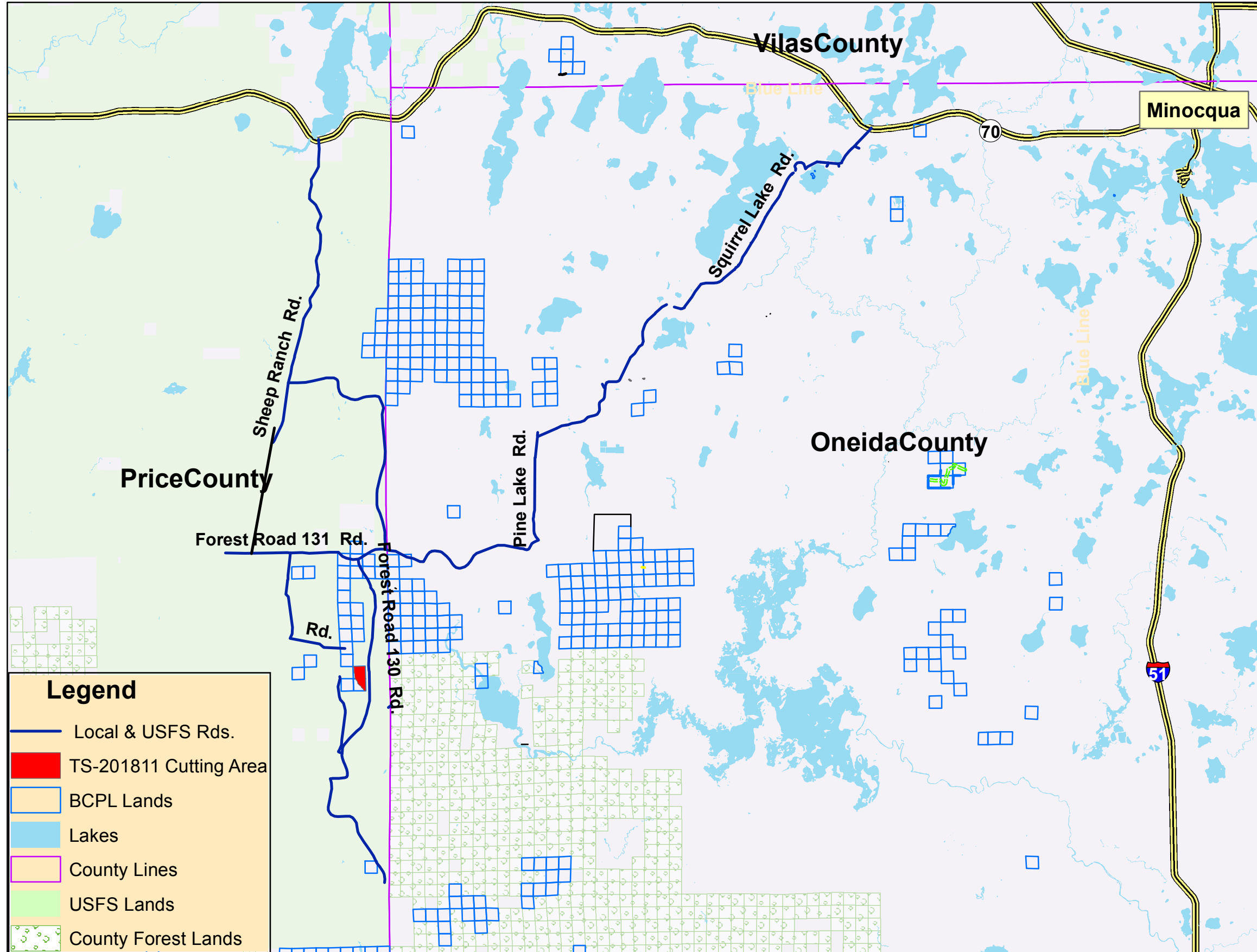
SALE OBJECTIVES: Marking removed trees with poor form and vigor, suppressed trees, crop trees that can no longer jump in grade and attempted to give a crown release to any crop trees.

Access & Terrain- Direct woods road access from County USFS Road 130. An extensive woods road network ensures short skidding distances. Terrain is flat. Soils are fine sandy loam and moderately well drained. They will take a couple of days to drain following heavy rain.

OTHER SALE REQUIREMENTS AND CONDITIONS:

- The BCPL can restrict the type of equipment used on the job if conditions or damage warrant.
- BMP's (see Field Manual PUB-FR-093-2010) are mandatory for this sale.
- Notify the BCPL (715-277-3366) before you start the job.
- **BCPL will take mill scale for both logs and pulp.**
- **Bolts are sold together with pulpwood as woods-run pulpwood.**

BCPL - TS-201811 - Stony Creek South Timber Sale Area Locator Map
T37N-R3E Section 1, SENW, NESW - Price County, WI. - Town of Emery



Scale 1:135,000

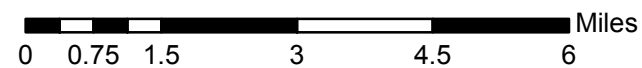
Total Cutting Area: 55 Acres

Harvest Prescription

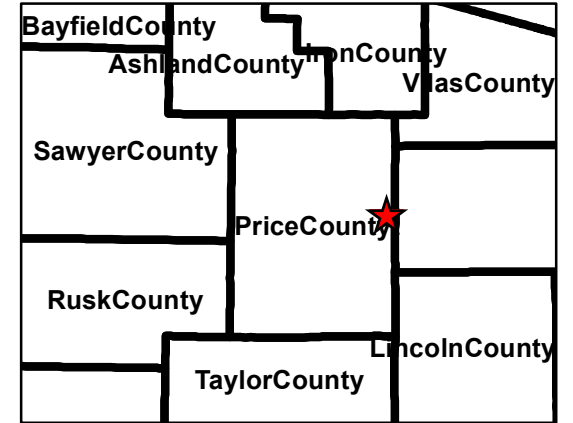
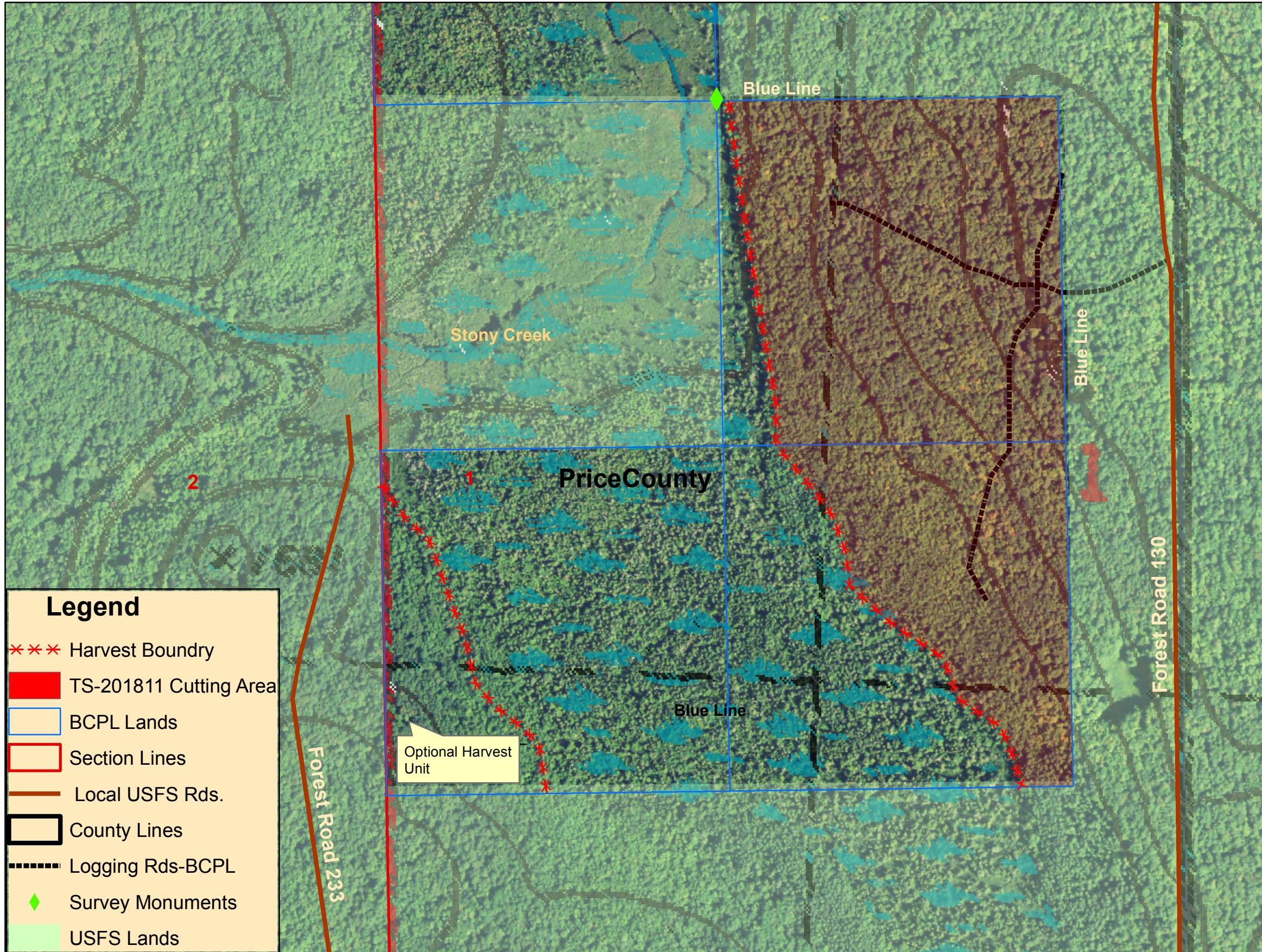
- Crop-Tree Release - Thinning
- Cut all trees marked with orange paint.
- Cut all Balsam fir with one or more sticks.

Legend

- Local & USFS Rds.
- TS-201811 Cutting Area
- BCPL Lands
- Lakes
- County Lines
- USFS Lands
- County Forest Lands



BCPL - TS-201811 - Stony Creek South Timber Sale Area Close Up Map
T37N-R3E Section 1, SENW, NESW - Price County, WI. - Town of Emery



Scale 1:5,000
Total Cutting Area: 55 Acres

Harvest Prescription

- Crop-Tree Release - Thinning
- Cut all trees marked with orange paint.
- Cut all Balsam fir with one or more sticks.

Legend

- *** Harvest Boundry
- TS-201811 Cutting Area
- BCPL Lands
- Section Lines
- Local USFS Rds.
- County Lines
- Logging Rds-BCPL
- ◆ Survey Monuments
- USFS Lands

