

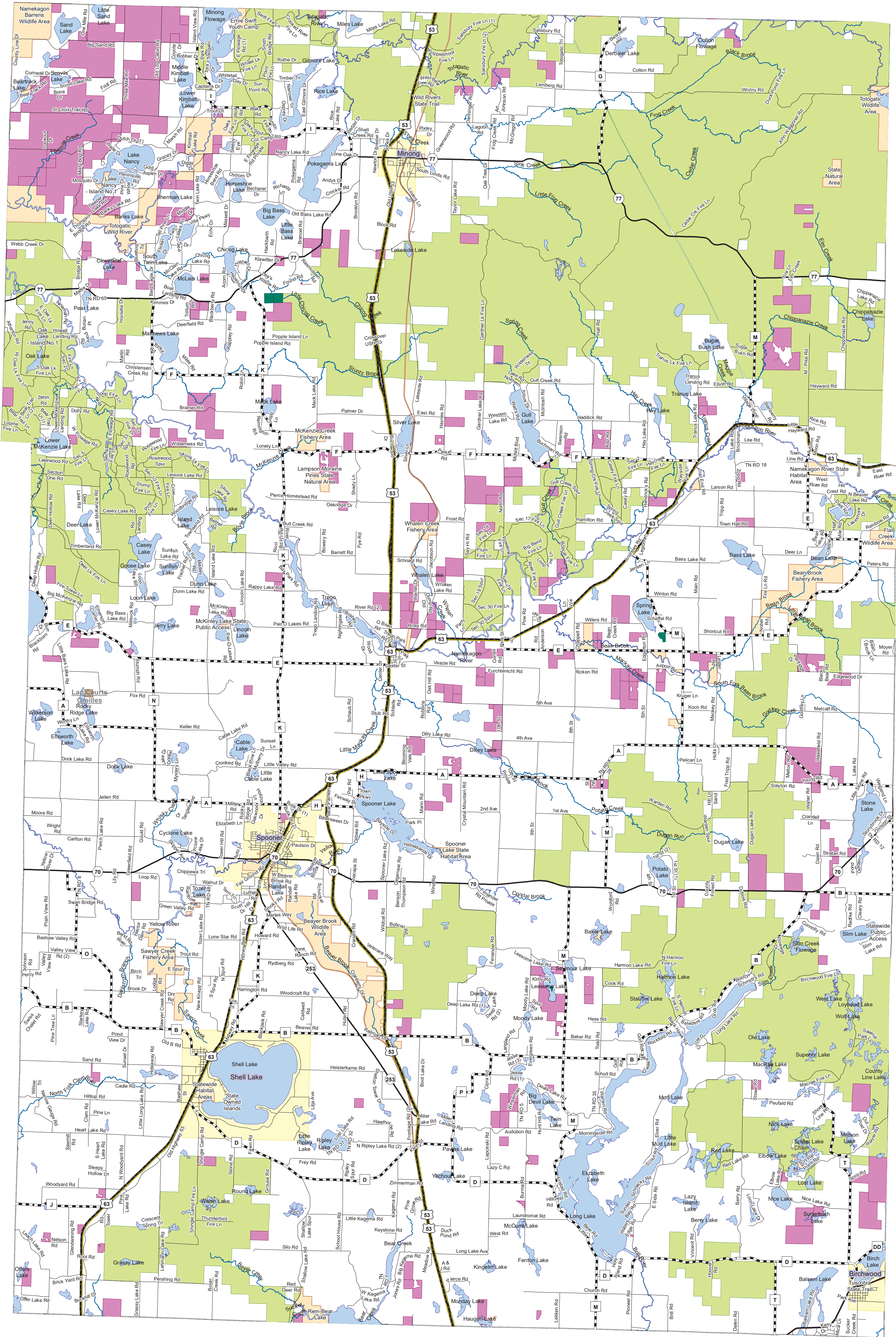
**MAP NOTES:**

The data shown on this map has been obtained from various sources, and are of varying age, reliability and resolution. This map is not an authoritative source of information about legal land ownership or public access. Users of this map should confirm the ownership of land through other means in order to avoid trespassing. No warranty, expressed or implied, is made regarding accuracy, applicability for a particular use, completeness, or legality of the information depicted on this map.

**COUNTY FORESTS:** Public lands that are managed at the county level.

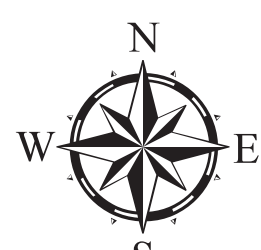
**NATIONAL FORESTS (NF):** Public lands that are federally administered and managed as forests.

**MFL OPEN:** The Forest Crop Law (FCL) and Managed Forest Law (MFL) data is a generalized spatial representation of lands enrolled by landowners in these programs. Often, enrolled parcels are represented by the center point of the approximate 40-acre square (a quarter-quarter section) in which they lie; however, the actual size can be much smaller. Specific location and ownership information, as well as information on public access to these lands, may be obtained through any DNR Forester or the landowner. Certain government lots or fractional lots, which cannot be represented by a Public Land Survey System (PLSS) quarter-quarter section description, are represented by either a quarter section or an entire section. This occurs for < 2% of the open MFL or FCL lands. Because of this, users should take additional care in researching the lands enrolled as open to public access before recreating.

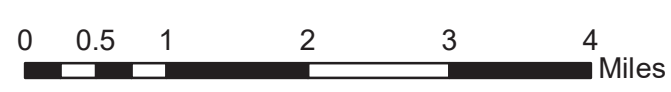


# Washburn County

BCPL Ownership and Public Land



Date: 8/10/2023



## Legend

- BCPL Ownership
- Tribal Lands
- Lakes and Ponds
- Local Road
- MFL Open
- Chequamegon NF
- Rivers and Streams
- County Highway
- DNR Land
- Nicolet NF
- State Highway
- County Forest
- Cities and Villages
- US Highway