

TS-202108
Marinette County

Spring Break Up Sale !

SALE NAME: Silver Cliff Section 34

Sale Type – Lump Sum with Installments

SALE LOCATION

Marinette County, Township of: Silver Cliff
Sections: 34 Town: 34N Range: 18E
Sale Size: 80 Acres

CONTRACT PERIOD: 3 Years

Contacts: John Schwarzmann, 715-277-3366, 715-892-0662 (c)
Kevin Burns 715-360-7438 (c)



Timber sold under this contract is certified. FSC® 100%:

Legal Descriptions

<u>Town and Range</u>	<u>Section</u>	<u>Quarter-Quarters</u>
T34N-R18E	34	NWNW, SWNW, NESW

Cutting Requirements

1. Cut all trees marked in orange paint.
2. Apply fungicide to stumps after cutting, (hand or machine) unless cut with more than 12 inches of snow.
3. Cutting will be allowed year-round.
4. Between April 1 and Sept. 1, red pine must be moved off site within three weeks of cutting.
5. In Unit # 1, cut all trees > 1 inch DBH. In Unit # 2, cut only trees marked in orange paint.

Timber Volume Estimates & Minimum Bid Values

<u>All Products (Tons)</u>	<u>Estimated Volume</u>	<u>Minimum Bid</u>
Red Pine	1080 Tons	\$13.00/Ton
Jack Pine	900 Tons	\$13.00/Ton
Aspen	420 Tons	\$13.00/Ton
Scrub Oak	240 Tons	\$9.00/Ton

ADVERTISED VALUE / MINIMUM ACCEPTABLE BID: **Volume per acre: Cords/acre-Tons/acre**
\$40,380 Cord Equiv. – 14.7/acre 33.0 Tons/acre

SALE OBJECTIVES: 1) Thin out seed-origin red pine stand to promote continued growth; 2) Move a jack pine site to red pine with artificial regeneration by clearcutting, and follow-up site prep. Due to the difficulty of regenerating jack pine because of excessive deer browsing, BCPL's best option is to move the site to red pine.

Access & Terrain - Direct access woods roads coming south from County Hwy C. In some places, adjacent brush and trees will need to be dozed or ground-up to widen the road for truck traffic. The site is very sandy and can be logged year-round. A rock outcrop has been excluded from the sale area. Terrain is flat or rolling hills. Forwarding distances are very short so logging efficiency should be very high.

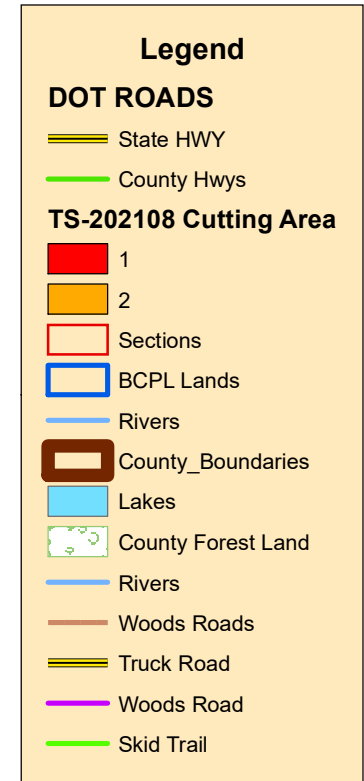
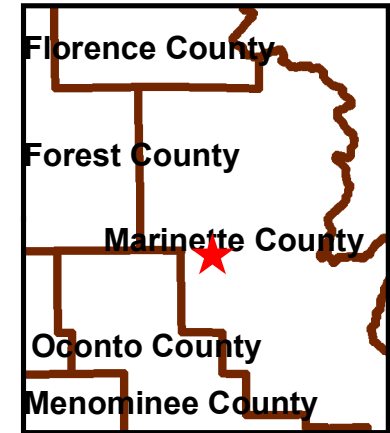
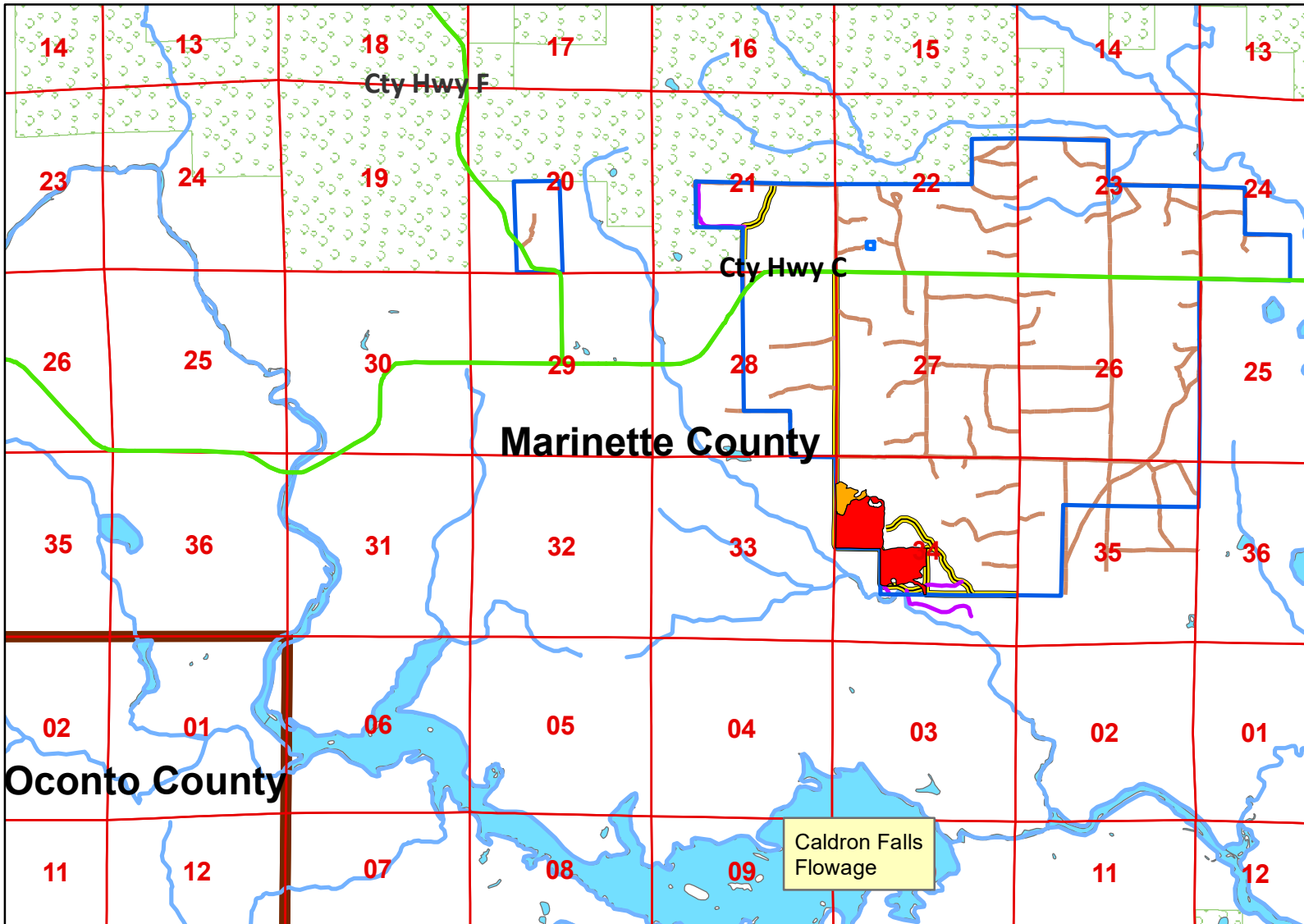
OTHER SALE REQUIREMENTS AND CONDITIONS:

- **The BCPL can restrict the type of equipment used on the job if conditions or damage warrant.**
- **BMP's (see Field Manual PUB-FR-093-2010) are mandatory for this sale.**
- **Notify the BCPL (715-277-3366) before you start the job.**
- **All products such as bolts, pulpwood, or sawlogs are sold by the Ton. The Contractor shall decide how to cut and market the marked trees.**

TS-202108 - Marinette County - Town of Silver Cliff

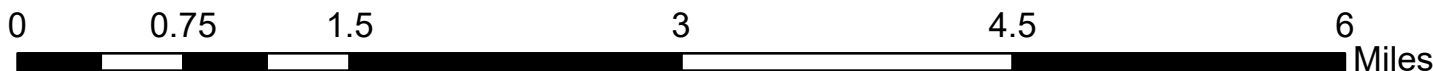
Locator Map : Cutting Area 80 Acres

Scale 1:55,000



Cutting requirements

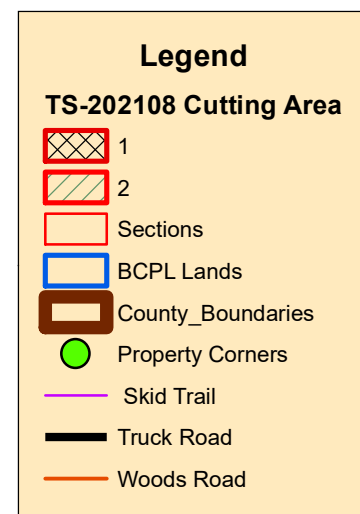
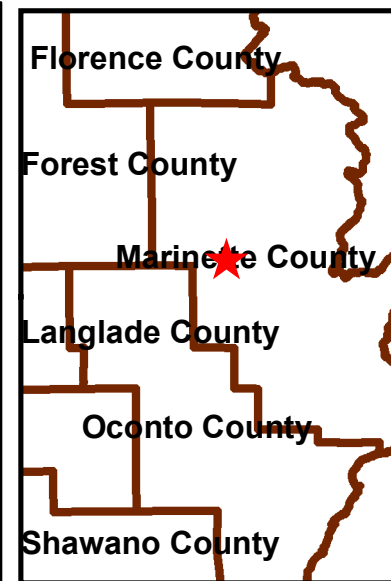
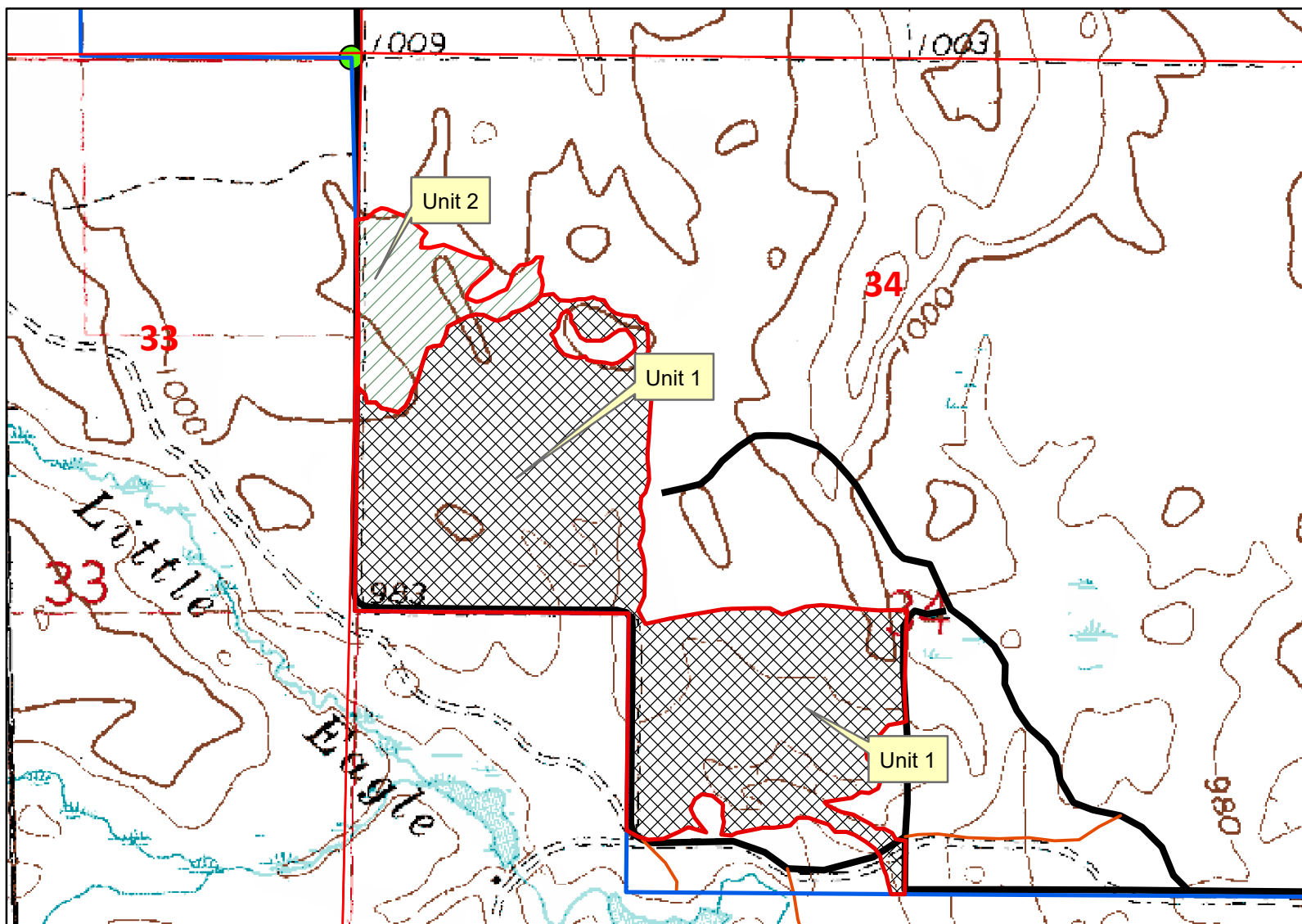
- 1) In unit # 2, cut trees marked in orange paint.
- 2) In unit # 1, cut all trees > 1 inch except those marked in teal paint.



Managing Wisconsin's trust assets for public education.

**TS-202108 - Marinette County - Town of Silver Cliff
T34N-R18E - Section 34, NWNW, SWNW, NESW**

Scale 1:10,000



Cutting requirements

- 1) In unit # 2, cut trees marked in orange paint.
- 2) In unit #1, cut all trees > 1 inch except those marked in teal paint.

