

TS-202001
Marinette County

Year-Round Logging Opportunity

SALE NAME: Camp 10 Rd Telephone Poles

Sale Type – Lump Sum with Installments

SALE LOCATION

Marinette County, Township of: Silver Cliff
Sections: 21, 26, 35 Town: 34N Range: 18E
Sale Size: 104 Acres

CONTRACT PERIOD: 3 Years

Contacts: John Schwarzmann, 715-277-3366 715-892-0662 (c)
Kevin Burns 715-360-7438 (c)



The mark of
responsible forestry
FSC® C120950

Timber sold under this contract is certified. FSC® 100%:

Legal Descriptions

| <u>Town and Range</u> | <u>Section</u> | <u>Quarter-Quarters</u> | <u>Section</u> | <u>Quarter-Quarters</u> |
|-----------------------|----------------|-------------------------|----------------|-------------------------|
| T34N-R18E | 21 | NESW, NWSE | 26 | NWNE, NENW, NESW, SESW |
| | 35 | NWNW, SWNW, NWSW | | |

Cutting Requirements

1. Cut all trees marked in orange paint.
2. Apply fungicide to stumps immediately after cutting, unless done with more than 12 inches of snow.
3. Cutting will be allowed year-round.
4. Between April 1 and Sept. 1, red pine must be moved off site within three weeks of cutting.

Timber Volume Estimates & Minimum Bid Values

| <u>All Products (Cords)</u> | <u>Estimated Volume</u> | <u>Minimum Bid</u> |
|-----------------------------|-------------------------|--------------------|
| Red Pine | 1,140 Cords | \$86/Cord |

ADVERTISED VALUE / MINIMUM ACCEPTABLE BID:
\$98,040.00

Volume per acre: Cords/acre-Tons/acre
Cord Equiv. – 11.0/acre 25.0 Tons/acre

SALE OBJECTIVES: Third thinning red pine stands were marked to select the straightest trees between 14 and 20 in. DBH that could potentially make telephone poles. BCPL doesn't want the straight trees to grow beyond telephone pole specifications and miss the opportunity to bring this product to market. All marked trees are between 13 and 20 inches DBH. The average marked tree is 16 inches DBH with 7-1/2 sticks (> 1/2 cord per tree). Most of the poles are 47 and 52 feet in height. Some of the larger poles in the 18 and 20-inch diameter classes will make 57-foot poles. Most of the poles are class 2 and 3 with some class 1. Very few poles are class 4. **We estimate that 62% of the marked trees (1,286 trees) are pole quality.**

Access & Terrain- Direct access either from Town Roads or from fire lanes that go out to County Hwy C or Camp 10 Road. Terrain is flat or rolling hills with sandy ground. Skidding distances are short. Trees were marked high so that they are visible above the abundant hazel brush. With abundant roads and wide spacing between trees, there should be plenty of room to handle pole-length material.

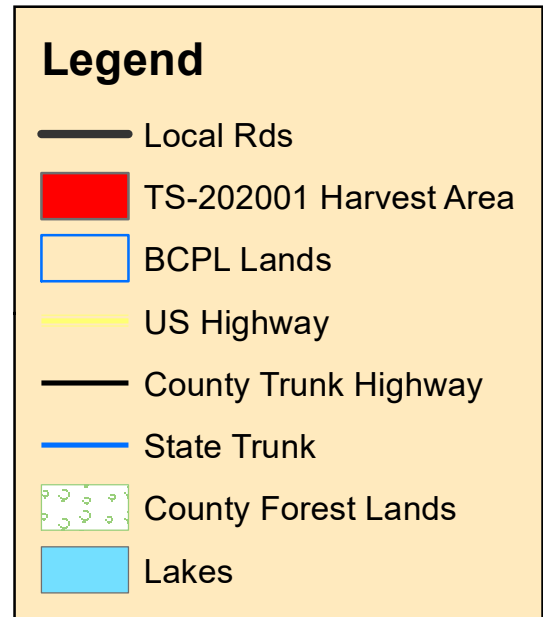
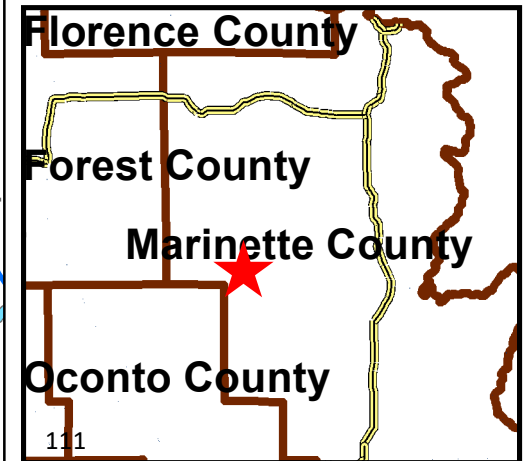
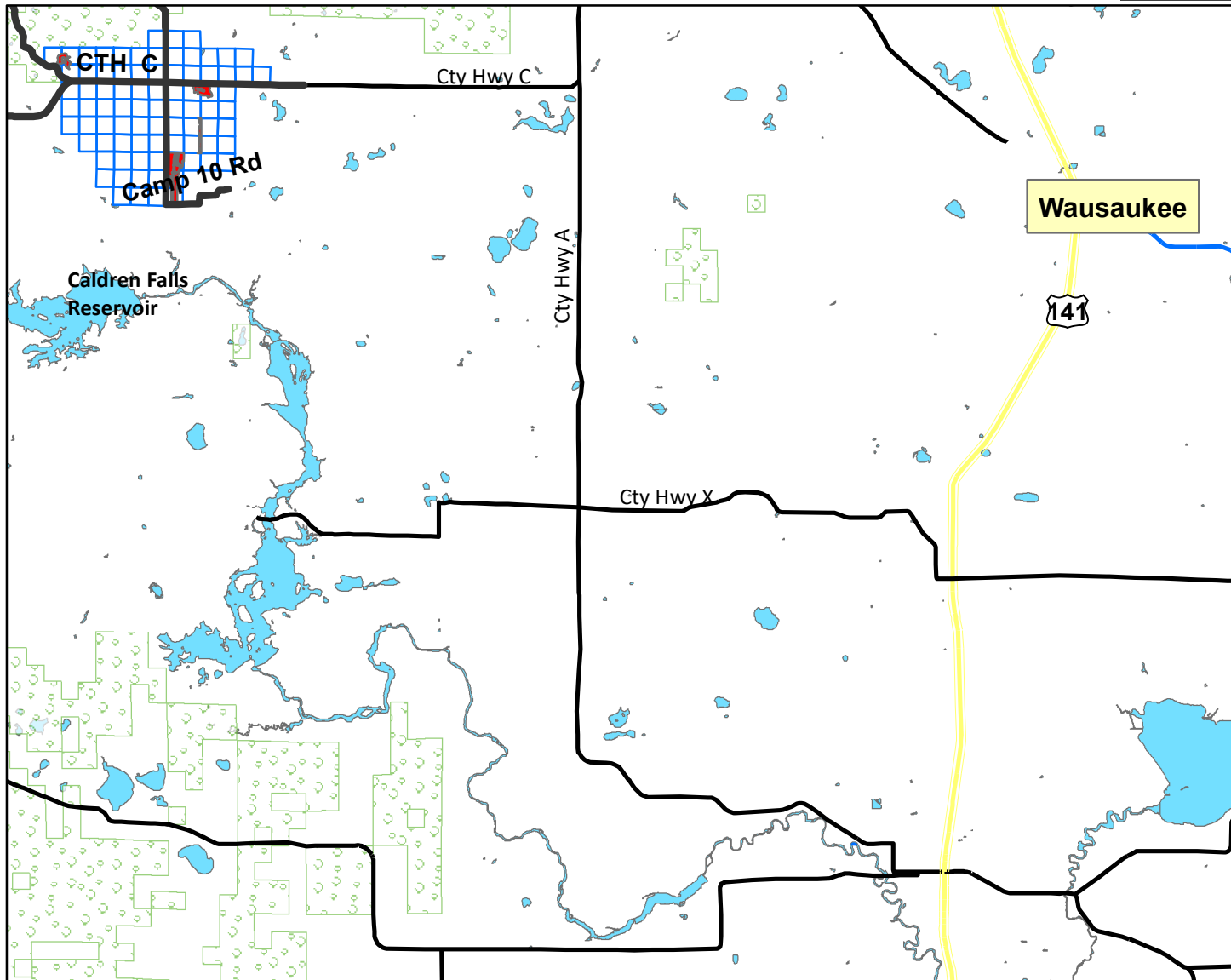
OTHER SALE REQUIREMENTS AND CONDITIONS:

- The BCPL can restrict the type of equipment used on the job if conditions or damage warrant.
- BMP's (see Field Manual PUB-FR-093-2010) are mandatory for this sale.
- Notify the BCPL (715-277-3366) before you start the job.
- All products such as telephone poles, pulpwood, cabin logs or sawlogs are sold by the cord. The Contractor shall decide how to cut and market the marked trees.

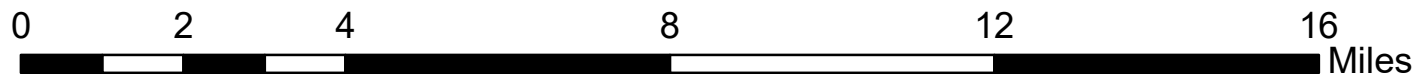
Pole Diameter Distribution

| <u>DBH</u> | <u>Estimated Number</u> |
|------------|-------------------------|
| 14 | 333 |
| 16 | 637 |
| 18 | 258 |
| 20 | 58 |

BCPL - TS-202001 - Red Pine Telephone Pole Timber Sale T34N-R18E Sections 21, 26, 35 - Locator Map

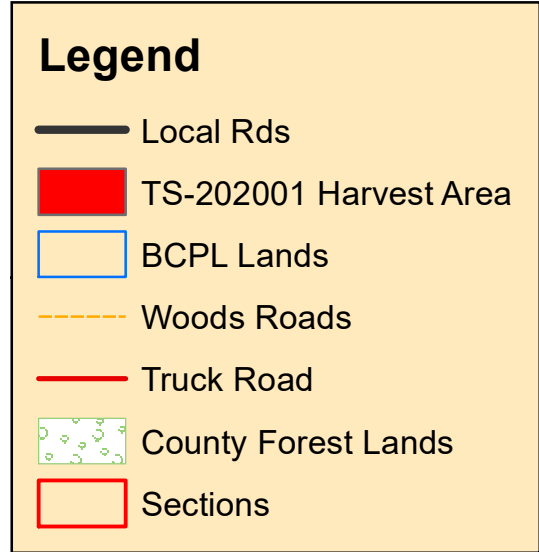
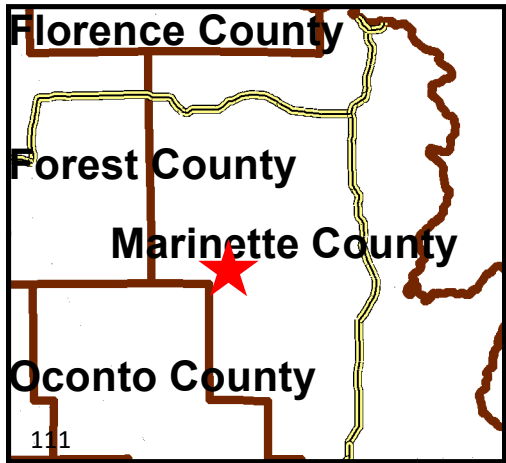
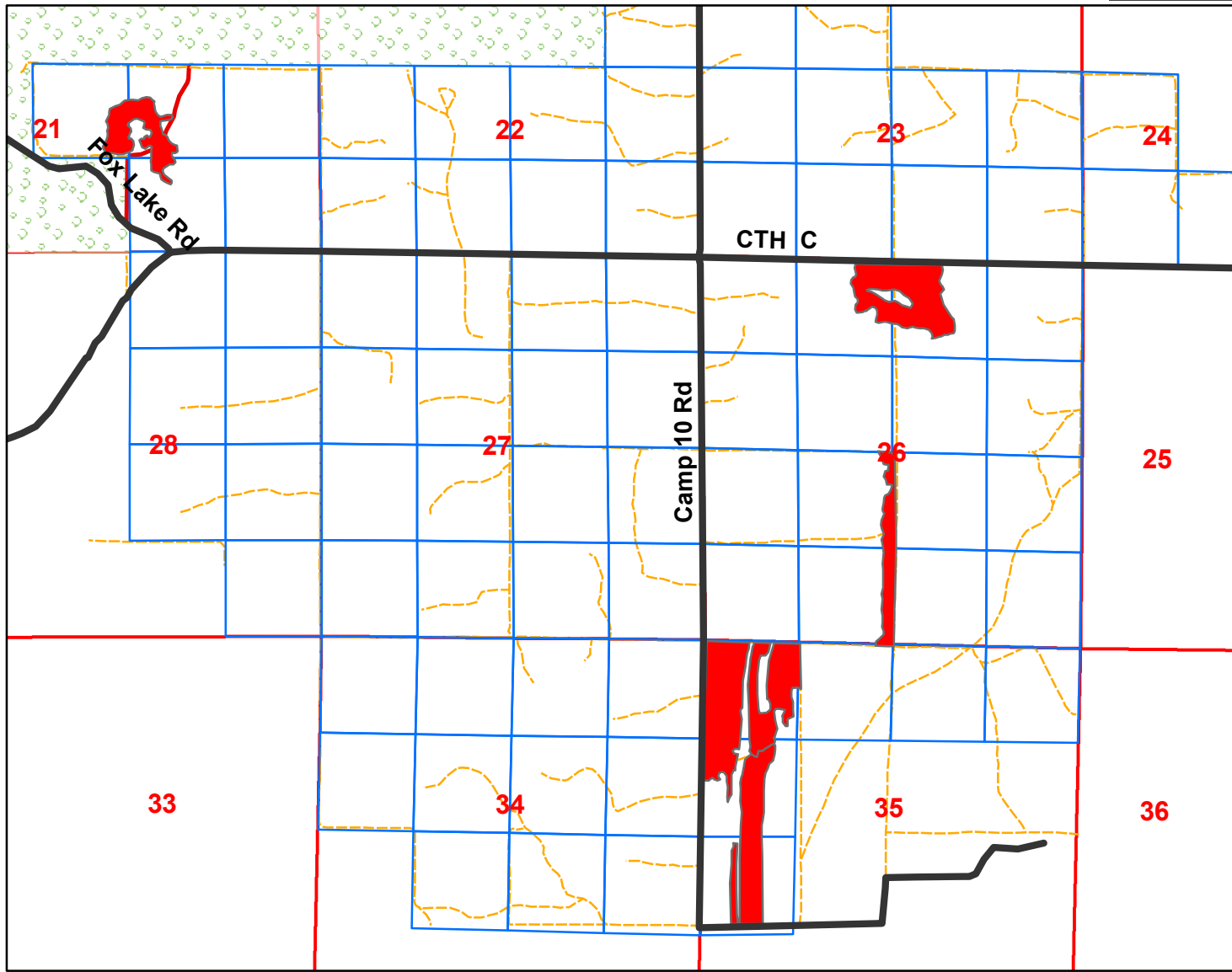


Harvest Prescription ■ Cut all trees marked in orange paint

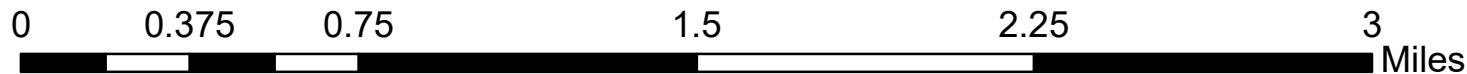


Cutting Area: 104 Acres
Scale: 1:150,000

BCPL - TS-202001 - Red Pine Telephone Pole Timber Sale
T34N-R18E Sections 21, 26, 35
Marinette County, WI. - Town of Silver Cliff



Harvest Prescription Cut all trees marked in orange paint



Cutting Area: 104 Acres
Scale: 1:27,000