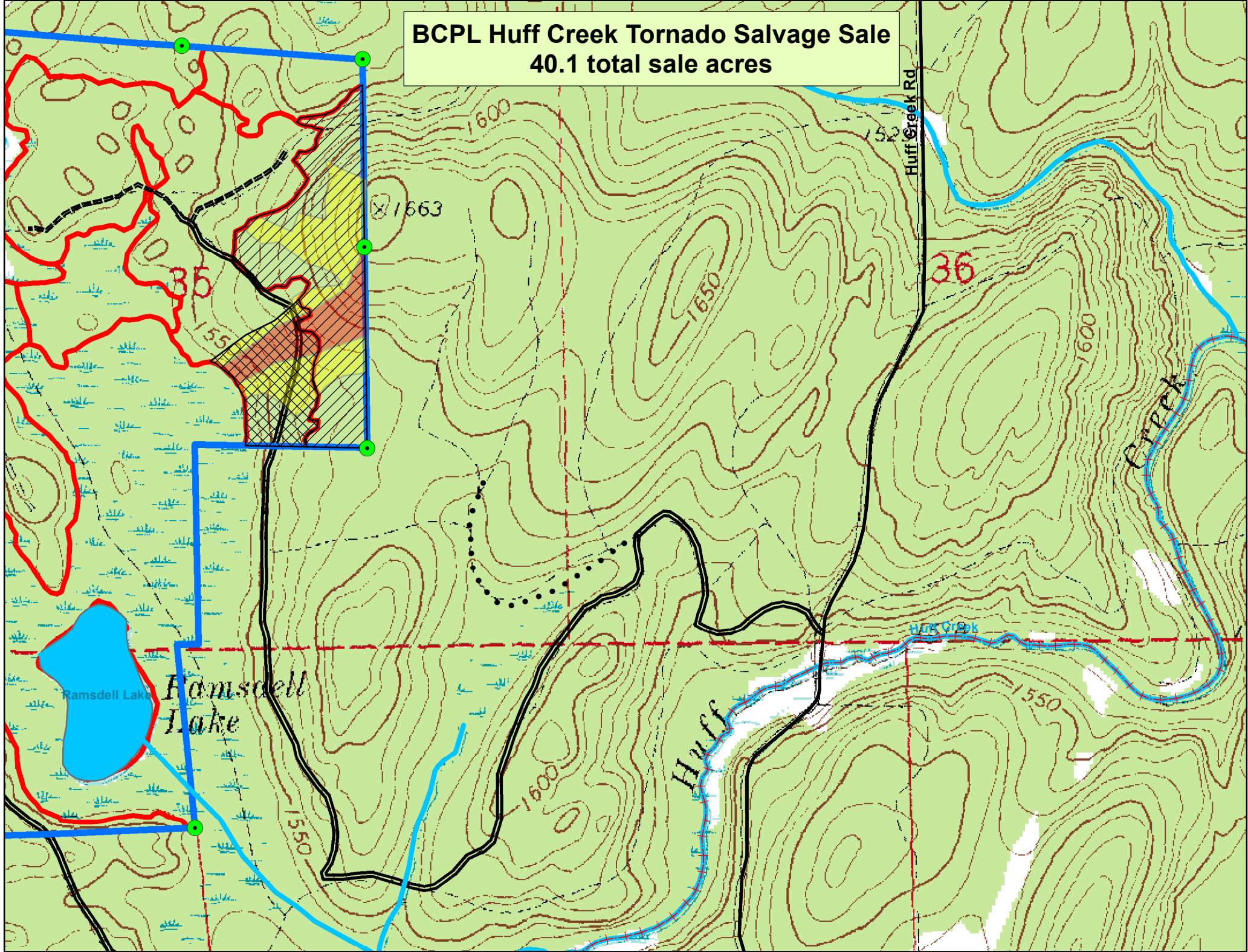


BCPL Huff Creek Tornado Salvage Sale
40.1 total sale acres



BCPL Huff Creek Tornado Salvage Sale
40.1 total sale acres

Allen Creek Blowdown

- Blowdown Damage**
- 25-50% (15.3 ac)
 - 75-100% (7.2 ac)

Salvage Sale

- Harvest Prescription**
- Aspen Clearcut plus all Down (11.4 ac)
 - NH Marked Thin plus all Down/Sprung (28.7 ac)

Property lines marked with Blue Paint
Aspen clearcut marked with Red Paint
Standing NH cut trees marked with Orange Paint
Salvage all trees with a 20% lean or greater

Volume Estimate (rough)

- Aspen Pulp/Bolts = 130 cords
- Mixed Hardwood Pulp/Bolts = 200 cords
- Basswood Pulp = 40 cords
- Sugar Maple Logs = 5.0 MBF
- Basswood Logs = 10.0 MBF

Huff Creek 2
13.5 acres

